

6.5" (166MM) COMMERCIAL GRADE WOOD CHIPPER

YARDBEAST[®]

6525



**CHIPPING POWER
THAT IS SIMPLY
UNMATCHED.**



GET IT DONE QUICKLY AND EFFICIENTLY!

POWER UNLEASHED!

It's simple design and easy to understand operation makes this chipper extremely user friendly.

The Yardbeast 6525 has been designed to achieve efficient disposal of wood material up to 6.5 inches by utilizing powerful commercial grade engines that can withstand the rigor of tree work without compromise.

This gravity-fed wood chipper achieves amazing self feeding capability thanks to a carefully angled feeding chute and rotor blades that saves tons of time from pruning.



RELIABLE TRANSFER OF POWER

Just as splitting wood with an axe, chipping is all about cutting power. To maximize the transfer of engine torque to the blade, our engines are coupled with high power transfer clutches and belts that is dynamically assisted by a proprietary tension idler.

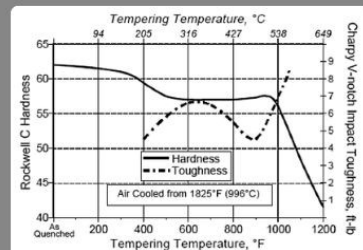


Tri-lobe clutch design allow for many improvements over traditional clutches like quieter operation, less slippage and advanced spring compression technology.



CUTTING MONSTER

Our chipper rotor is designed to deliver up to 5,300 cuts/min thanks to a 180-deg dual blade configuration with an open throat design. The blade cradle is precisely machined to achieve unparalleled self-feeding capabilities



Our blades are made of A8 steel. A vanguard type of steel that reacts well to demanding conditions, holding its geometry and sharpness. These blades are air hardened ensuring their structural integrity.



CHIPPING EFFICIENCY *Redefined*

Ditch the struggle, embrace the Yardbeast 6525 efficiency revolution! This chipper isn't just muscle, it's smart muscle. Here's how it conquers your yard while saving you time and sweat:

- **Simple Operation:** Forget complex manuals and complex controls. The 6525 is designed for intuitive use, letting you focus on feeding branches, not fiddling with knobs or electronics.
- **Straightforward Maintenance:** No more wrestling with clunky parts. The 6525's accessible KISS design makes your maintenance a breeze, keeping you up and running with minimal downtime.
- **Reliable Beast:** Built to last and perform. The 6525 boasts premium components and rock-solid construction that won't let you down, even on the toughest jobs.



Traditionally, wood chippers rely on a single anvil to smash branches against the spinning blades. But the Yardbeast 6525 doubles down with two strategically positioned anvils that corners the branch up at the top, creating an amazing self feeding effect on a wide array of woods and fibrous material like palm fronds.

RIDE SMOOTH

Thanks to its innovative torsion suspension and large pneumatic wheels, the 6525 delivers a surprisingly smooth ride, even over uneven terrain.

From the flatness of highway to rolling on the mountains of West Coast, the 20.5-inch pneumatic wheels also play a role in the smooth ride. These large wheels provide plenty of ground clearance, and they also help to absorb bumps and shocks. The pneumatic tires also provide good traction, even on loose or wet surfaces.



The torsion suspension system uses rubber rods instead of traditional coil springs to absorb bumps and shocks. This provides a smoother ride than traditional suspension systems, while also providing better clearance over obstacles encountered when getting to the worksite.



Yard work's done, Yardbeast stored. Its articulating feed chute folds tight, saving precious space in your shed.

Need to swap the anvil or have a better look at the cutting area? No sweat! Simply swing the chute open, granting easy access for hassle-free replacements. Work smarter, store easier, conquer every yard with the Yardbeast.



TOW IT LIKE YOU MEAN IT!



With marine grade powerful lightning, hook the trailer terminal connector and the beast will make sure to be seen on the road. All of our lightning is compliant with DOT regulations for road and highway.



The Yardbeast 6525 is fitted with everything you need to tow this beast right off the bat. heavy duty chains, Class II 2-inch ball coupler with and a 1,000 lb marine grade trailer jack with dolly wheel to make moving this chipper easier.



The torsion suspension design gives the Yardbeast 6525 exceptional ability to go over difficult obstacles like taller-than-usual curbsides.

360-DEG DISCHARGE

The Yardbeast 6525 comes with a simple no frills discharge that has a 10-position 360-degree adjustable discharge. The discharge is quickly positioned by pushing down the clamping lever. The angle of discharge is adjusted by positioning the discharge deflector. The semi open throat allows the material to flow more freely minimizing the chance of clogging.



CARB/EPA FUEL SYSTEM

Fuel your chipping fury with the Yardbeast 6525's 5-gallon HDPE fluorinated fuel tank. This beastly reservoir shrugs off rocks and debris like a walk in the park, thanks to its ultra-strong construction. But it's not just tough, it's clean. The tank also traps harmful vapors in its dedicated vapor carbon canister with tank and purge ports, meeting strict CARB and EPA evaporative emission standards and keeping the air fresh and the job running smoothly.



A purge valve is a device used to remove excess fuel vapor from a vehicle's evaporative emission control system. It is typically located on the fuel tank and opens to allow fuel vapor to be drawn into the engine to be burned rather than released into the atmosphere as pollution.



CHOOSE YOUR ENGINE



KOHLER CH742

750cc V-twin Commercial - 25 HP

- **Powerful and efficient:** Boasting a 747cc V-twin OHV engine, the CH742 churns out 25 gross HP and a hefty 41.2 ft-lbs of torque. This translates to smooth operation and ample muscle for tackling demanding tasks, whether powering zero-turn mowers, generators, or pressure washers.
- **Durable and reliable:** Built with Kohler's renowned quality and heavy-duty components, the CH742 is engineered for long-lasting performance. Features like cast iron cylinder sleeves, pressurized lubrication, and dual element air cleaner ensure extended engine life and minimize downtime.
- **Easy to use:** The CH742 prioritizes user convenience with features like a top-mounted controls, commercial duty air filter, quick-change oil filter for effortless oil changes. Added features like external oil cooler and low-oil auto shutdown sensor maximizes engine operational life.

KOHLER
IN POWER. SINCE 1920.



FNA CRX750

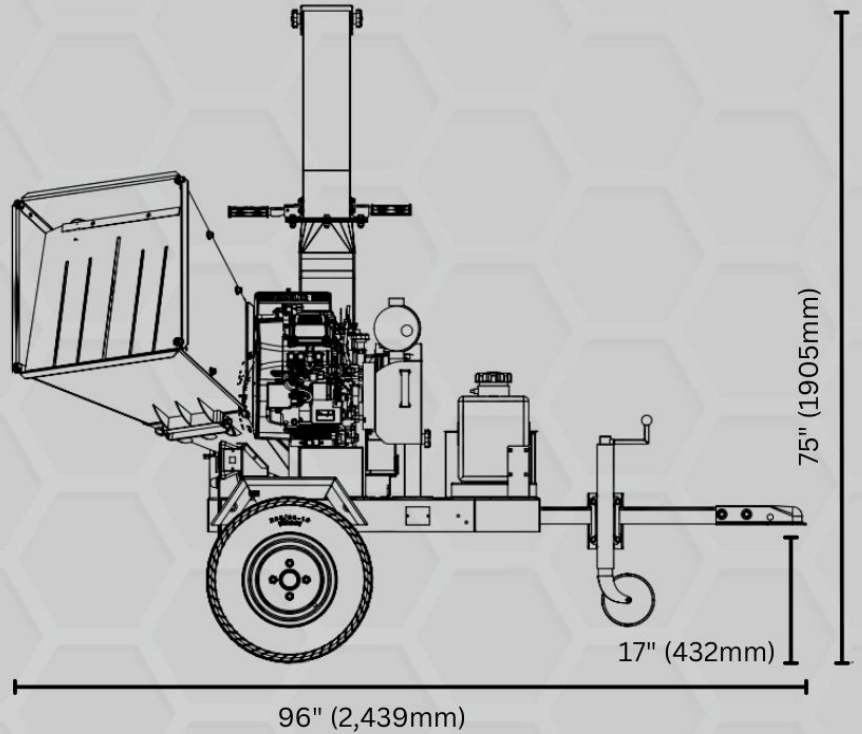
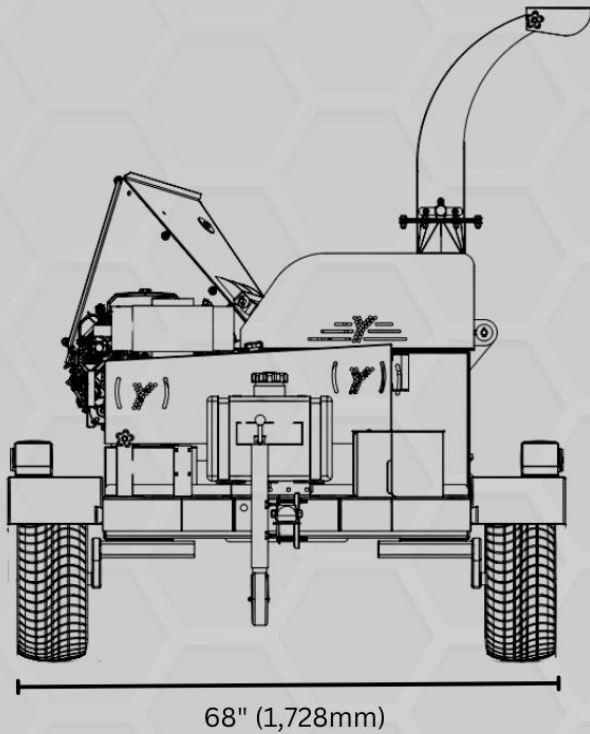
750cc V-twin Commercial - 22 HP



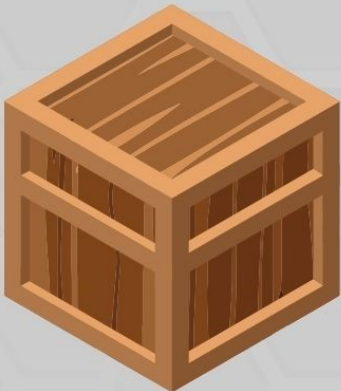
- **Powerful Performance:** This engine packs a punch with its 750cc OHV design, delivering a robust 22 horsepower and 34 ft-lbs of torque.
- Cast iron cylinders decrease friction between mating parts as well as which helps keep the engine cool during extreme applications
- Precision-machined, forged iron crankshaft designed for low vibration and toughness required for the most extreme duty cycles.
- Industrial tough mufflers and shields designed for improved sound quality and lower sound level
- Low oil auto-shutdown sensor prevents damage to the engine when oil volume is low



CHIPPER DIMENSIONS



SHIPPING DIMENSIONS



CRATE 1 (CHIPPER)

Length: 78"
Width: 44"
Height: 46"
Weight: 1,050 lb



CRATE 2 (ACCESSORIES)

Length: 34"
Width: 30"
Height: 22"
Weight: 150 lb



All of our chippers are dispatched from our warehouse in Miami, Florida by LTL (Less-than-Truckload) freight across continental United States.

SPECIFICATIONS

CHIPPER

- Chipping capacity: 6.5" (166mm)
- Rotor RPM: 2,100 approx
- Rotor Weight: 132 lb
- Blade: Dual A8 Tool Steel Reversible Blade
- Blade dimensions: 8.4" x 4" x 1/2" with Dual Anvil knife bed.
- Rotor Construction: 3/4" thick steel with 3/8" rotor vanes
- Flywheel: 25"
- Feed Hopper: 25" x 23" collapsible for transport
- Frame construction: 3/16" thick steel. Weld seams all around.
- Bearing units: SKF® or NTN® premium roller sealed bearings /custom forged housing
- Discharge height: 77"
- Control: Discharge deflector
- Chipper Weight (w/engine): 867 lb

ENGINE OPTIONS

- Kohler® Command Pro 747cc - 25HP engine Commercial V-Twin. w/Electric Start.
- CRX® 750cc 22HP engine Commercial V-Twin and Electric Start

TANK SYSTEM

- Fuel Tank Capacity 5.0 Gal Fluorinated w/ Carbon Vapor Canister CARB/EPA Approved
- Emissions CARB Tier III certified

TRANSMISSION

- Drive: NORAM® Tri Lobe Commercial centrifugal clutch
- Belts: Gates® Hi-Power II Banded Belt
- Rotor Pulley: Cast Iron pulley with 1-1/2" Heavy Duty taper hub.

TRAILER

- Wheels: 20.5" High-Speed Wheel - 5 spoke
- Frame construction: 1/8" thick steel with engine base tension plate, and structural crosslinks
- Total Frame width: 68"
- Suspension: Torsion stub suspension
- Guards: Belt Guard with 3-point support
- Rear Axle: Fixed, 1/8" Steel thick 21-1/4" wide
- Hitch: 2" Class-II Ball Hitch Coupler with chain hooks
- Trailer: DOT Compliant Trailer with suspension with lightning kit

Our goal is to make the best chippers.

We take pride in being a customer-oriented organization. We design, fabricate, test, and ship our units directly to our dealers and customers like you.

Since our origins, it has been our mission to provide second to none quality wood chippers that will stand the test of hard work in time. We achieve that by combining a variety of factors such as simplicity of use, heavy-gauge materials, top-quality third-party components, and a one-user operating and maintenance design mindset.



Owners of our chippers will confirm that they have a sturdy, powerful, top quality product that delivers. We're proud not only of our chipper's efficient abilities but also for its sleek design. In fact, we love every part of it! We think you will too.

At Yardbeast, we stand behind our products and fully support our commercial customers by offering a limited 1 year or 1,000-hr US commercial warranty that includes consistent and reliable technical advice, spare parts, and a network of US-domestic servicing dealers to provide a fast turnaround from downtime to operation.

Once you get to know your Yardbeast, you will find yourself with an easy to use, dependable piece of equipment that will be there to help you through your yard clearing jobs for many seasons to come.

Have Questions? Get in touch!

☎ (305) 396-3396

✉ sales@yardbeast.com