

# YARDBEAST®

# 2510

2.5" (77mm) Wood Chipper Shredder



powered by

**KOHLER®**  
IN POWER. SINCE 1920.





SELF FEEDING  
**BEAST!**



## BEASTIE CHIPPER

The Yardbeast 2510 is a robust small chipper capable of efficiently chipping branches up to 2.5 inches. Its design allows the chipper to be towed effortlessly by hand around the property. This chipper also comes with our well know split chipper frame that allows quick inspection to blade and rotor before each use.

**TRU-  
FEED**



All of our chippers are advertised as true feed capacities meaning this chipper will take a 2.5 inch and chip it efficiently.



# ENGINE POWERHOUSE

**CH-395**  
**9.5HP**

**KOHLER**  
IN POWER. SINCE 1920.

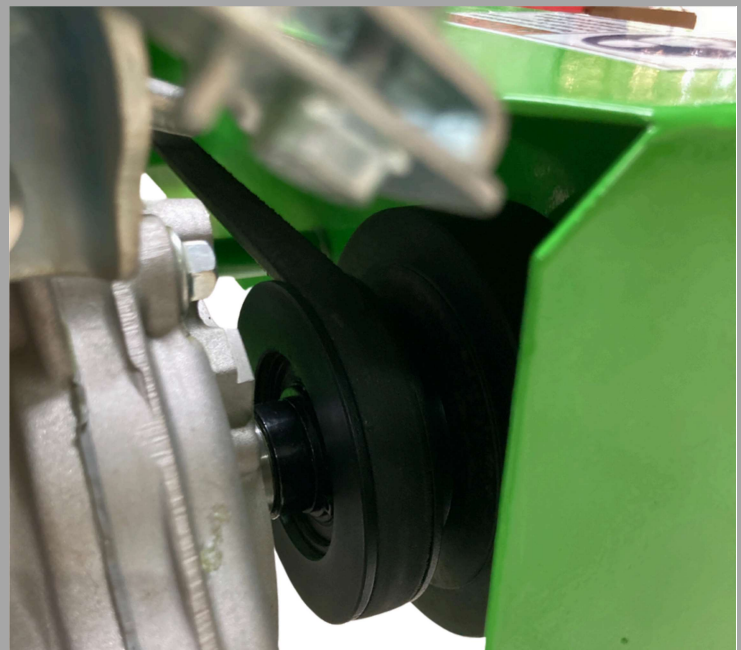


Kohler's CH395 Command Pro engine packs a powerful punch for professional tasks. This air-cooled, single-cylinder engine boasts a displacement of 277 cc, delivering 9.5 horsepower for tackling demanding chipping work around the property. The most striking features are:

- Low-Oil Shutdown Sensor
- Quad-Season Cyclonic Air Filter
- Large Capacity Fuel tank
- Cast Iron Cylinder



This transmission system features a single pulley with a tapered hub. This design minimizes wobbling and ensures smooth transmission of rotational force (torque).

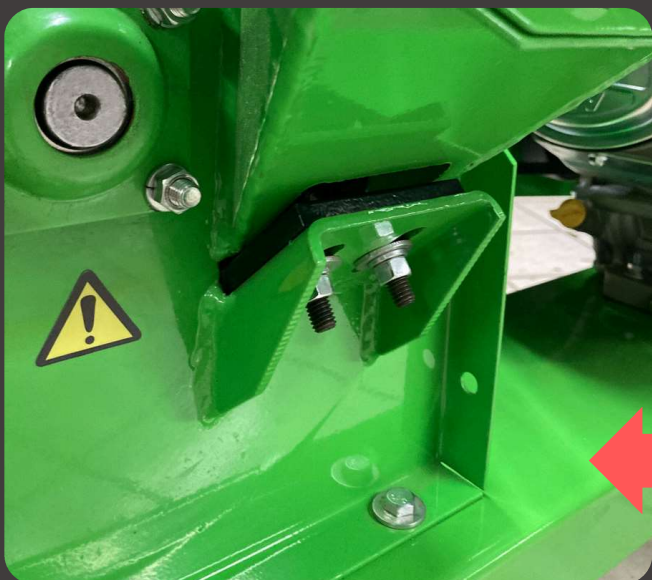


The engine is fitted with a Hilliard® heavy duty centrifugal clutch that engages or disengages when the engine reaches 1,800RPM. A clutch allows user to start the engine easily.





The design of the Yardbeast 2510 makes checking on rotor and its components a breeze. Once you open the top half of the chipper, the blade is completely exposed allowing the user to fully inspect the edge and integrity of the blade prior to each use. This design also makes detangling material from the shaft easier and faster.



The short wide chute makes chipping riddled branches super easy and saves pruning time.

The anvil is a 3/8" thick heat treated piece of steel with sharp right edges that is carefully angled in a way that it helps feed the branch into the chipper







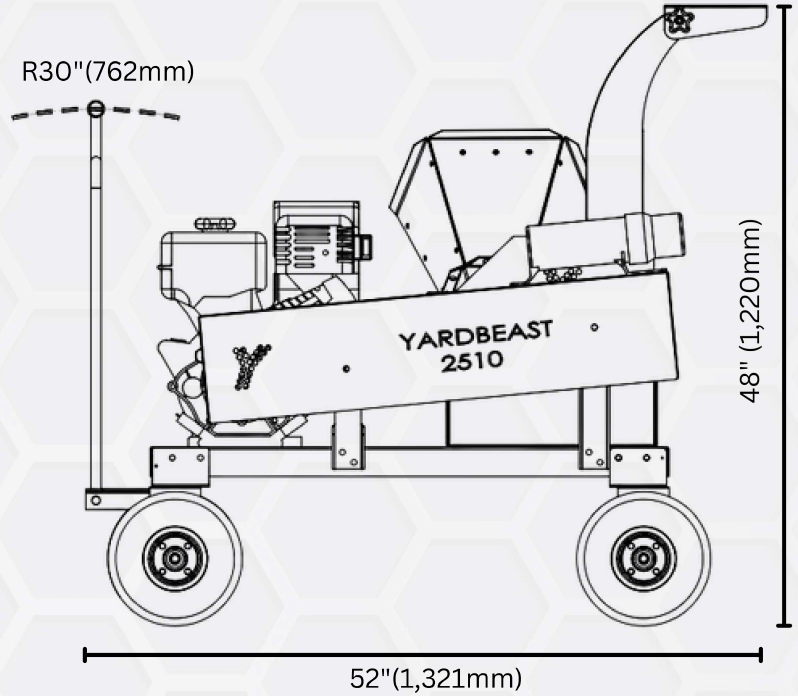
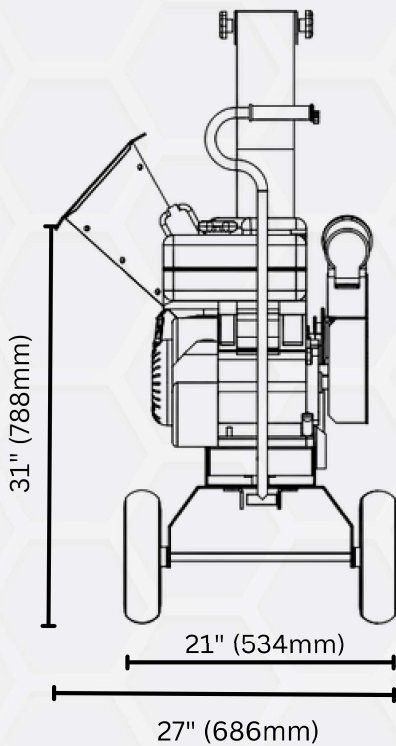
# SPECIFICATIONS

- Chipping capacity: 2.5"
- Rotor RPM: 3,000
- Rotor Weight: 16 lbs
- Blade: D2 Tool Steel Blade
- Blade dimensions: 4.33" x 2.04"
- Rotor Construction: 1/4" thick disc with 1/4" thick rotor vanes
- Flywheel: 13"
- Feed Hopper: 13" x 7.5"
- Frame construction: 10-ga steel. Weld seams all around
- Bearing units: SKF® roller sealed bearings /custom steel housing
- Discharge height: Ground floor
- Chipper Weight (w/engine): 232 lbs
- Transmission Drive: Hilliard® Heavy Duty centrifugal clutch
- EngineMake: Kohler CH395 277cc engine
- RPM: 3,600
- Torque: 13.9ft-lbs
- Dry Weight: 61 lbs.
- Displacement: 277cc
- Oil Capacity: 1.4 quarts (1.3 liters)
- Emissions: CARB Approved
- Belts: 1- Gates® Hi-Power II Belt
- Rotor Pulley: Cast Iron pulley with 7/8" taper hub
- Trailer Wheels: 4-10" Dia, Pneumatic Wheels
- Frame construction: 1/8" thick steel with engine base tension plate
- Axles: 1/8" Steel thick, 21-1/4" wide
- Hand tow bar length: 37.5"

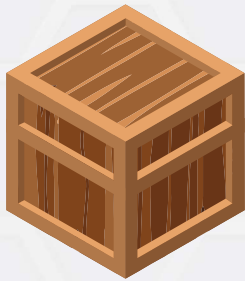


# CHIPPER DIMENSIONS

## 2510



# SHIPMENT DIMENSIONS



The chipper is shipped in a robust metal cage that contain all the parts required for assembly. (Tools must be provided by owner). User manual is lodged inside the black plastic manual canister above the belt guard.

## CRATE SPECS

Length: 42"    Width: 27"  
Height: 25"    Weight: 232lb



All of our chippers are shipped from our warehouse in Miami, Florida by LTL (Less-than-Truckload) freight across continental United States.



# Our goal is to make the best chippers.

We take pride in being a customer-oriented organization. We design, fabricate, test, and ship our units directly to our dealers and customers like you.

Since our origins, it has been our mission to provide second to none quality wood chippers that will stand the test of hard work in time. We achieve that by combining a variety of factors such as simplicity of use, heavy-gauge materials, top-quality third-party components, and a one-user operating and maintenance design mindset.



Owners of our chippers will confirm that they have a sturdy, powerful, top quality product that delivers. We're proud not only of our chipper's efficient abilities but also for its sleek design. In fact, we love every part of it! We think you will too.

At Yardbeast, we stand behind our products and fully support our commercial customers by offering a limited 1 year or 1,000-hr US commercial warranty that includes consistent and reliable technical advice, spare parts, and a network of US-domestic servicing dealers to provide a fast turnaround from downtime to operation.

Once you get to know your Yardbeast, you will find yourself with an easy to use, dependable piece of equipment that will be there to help you through your yard clearing jobs for many seasons to come.

## Have Questions? Get in touch!

☎ (305) 396-3396

✉ [sales@yardbeast.com](mailto:sales@yardbeast.com)